

40th Volvo Youth Sailing ISAF World Championship 2010

8 - 17 July 2010, Istanbul, TURKEY

Organizing Authority: The Championship will be organised by the Turkish Sailing Federation (TYF) under the authority of the International Sailing Federation (ISAF).

Sailing Instructions

Approved by ISAF on 7th June 2010

1. Rules

- 1.1 The championship will be governed by the 'rules' as defined in the *Racing Rules of Sailing*.
- 1.2 No national prescriptions will apply.
- 1.3 Class rules requiring competitors to be members of the class association will not apply.

2. Advertising

In accordance with ISAF Regulation 20.4.1.3 (Advertising Code) advertising on the supplied equipment is only available to the organizing authority.

3. Identification

- 3.1 Each boat shall carry on her mainsail (all) and bow (except RS:X Class) the national letters. For all classes they are supplied by the organizing authority. This changes rule G 1.
- 3.2 Each day while racing, the first, second and third boat in series scores at the beginning of the day shall display a yellow, blue or red sticker, respectively, on each side of her mainsail. The organizing authority will supply the stickers and instructions for their use at the team leaders meeting.
- 3.3 All competitors shall wear bibs. The organizing authority will supply the bibs.

4. Cameras and Electronic Equipment

Boats may be required to carry cameras, sound equipment or positioning equipment as specified by the organizing authority.

5. Notices to Competitors

Notices to competitors will be posted on the official notice boards located near the race office. Unofficial copies of notices to competitors may be posted on notice board in the entrance of the "Marina Hotel".

6. Changes to the Sailing Instructions

Any change to the sailing instructions will be posted before 0900 on the day it will take effect, except that any change to the schedule of the first races of a day will be posted by 2000 on the day before it will take effect. Further rescheduling may take place during the day. Reassignment of classes to the racing areas will be posted before flag D is displayed; see instruction 7.3.

7. Signals Made Ashore

- 7.1 Signals made ashore will be displayed on the official flagpoles located at the dinghy park. When a signal is displayed over a racing area flag, it applies to that area only.
- 7.2 When flag AP is displayed ashore, '1 minute' is replaced with 'not less than 60 minutes' in race signal AP.
- 7.3 Flag D with a sound signal means: 'The warning signal will be made not less than 60 minutes after flag D is displayed or not before the scheduled time, whichever is later. Boats or boards shall not leave their allocated berths until this signal is made'. Practice sailing on day 1 and day 2 is only allowed if flag D is displayed ashore.

8. Boats and Boards

- 8.1 All boats and boards will be provided for all competitors. Competitors with provided boats shall not modify them or cause them to be modified in any way except that:
 - (a) A compass may be tied or taped to the hull or spars.
 - (b) Wind indicators, including yarn or thread, may be tied or taped anywhere on the boat.
 - (c) Adhesive tape may be used anywhere above the waterline, but the tape needs to be removed after the event without leaving any permanent damage. There shall be no writing with permanent markers directly on the supplied equipment. No wax shall be applied. Hulls, centreboards and rudders may be cleaned, but only with water and ordinary non abrasive soap.
 - (d) All fittings or equipment designed to be adjusted may be adjusted, provided that the class rules are complied with.
 - (e) Competitors may use their own sponges and a hand bailer.
 - (f) For the Laser Radial only: Competitors must bring their own lines, sheet and blocks (including cunningham, downhaul, traveller and vang systems) and tiller/tiller extension. Competitors will be supplied with a fully fitted Laser hull including the deck block fitting and the two single blocks and cleats for the deck led cunningham and outhaul systems. The boats will

be supplied with mini side deck cleats for the main sheet, centreboard, rudder, mast, boom and sail.

- (g) For the 420 only: Competitors must use their own tow-rope (in accordance with specification of the class rules). Competitors may bring and use a fitting made of tape/wood/plastic and shock cord for retaining the spinnaker halyard. This fitting shall only be attached using tape and not in a position above the gooseneck. No adjustments to the bolt rope on the mainsail are allowed.
 - (h) For the RS:X only: Competitors must bring their own outhaul and downhaul systems (ropes, cleats and pulleys). No permanent fixings will be used to attach these. Harness lines will not be provided by the organisers.
 - (i) For the SL-16 only: The tension of the trampoline may only be adjusted by the manufacturer or manufacturer's representative.
 - (j) For 29'er only: The boat's sails, spars, rigging, control lines and fittings shall be used as supplied, unless alterations or additions are specifically authorized by the ISAF Technical Delegate. Halyards will be of Dyneema core (not wire) and may not be substituted. The boats will be supplied with foot straps at the aft end of the gunwale that can be installed by the competitor if required. Competitors may install their own tiller extension, or twin extensions, but the attachment fitting must be left installed on the tiller at the end of the regatta. There must be an additional shock cord attached to the foot straps and the aft main sheet block supplied by the manufacturer if a twin tiller extension will be used.
- 8.2 All equipment provided with the boat for sailing purposes shall be in the boat while afloat except when the provided equipment is replaced by items in compliance with instruction 8.1.
- 8.3 The penalty for not complying with one of the above instructions may be disqualification from all races sailed in which the instruction was broken.
- 8.4 Failure of supplied equipment will not be grounds for redress. This changes rule 62.1(a).
- 8.5 Competitors shall report any damage or loss of equipment, however slight, to the manufacturer's representative of the relevant class immediately after securing the boat ashore. Special forms will be available from the event office or from the manufacturer's representative to record the damage or loss. The penalty for breaking this instruction, unless the jury is satisfied that the competitor made a determined effort to comply, will be disqualification from the race most recently sailed.

- 8.6 *Replacements of Equipment Ashore:* Requests for substitution of damaged or lost equipment shall be made to the manufacturer's representative for consideration by the ISAF Technical Delegate. Permission will be given only when the ISAF Technical Delegate is satisfied that the item of equipment is severely damaged, not deliberately mistreated, and cannot be repaired satisfactorily. A request shall be made at the first reasonable opportunity on a form available from the protest desk.
- 8.7 *Replacements Afloat:* When an item of equipment is damaged or lost shortly before a race and is replaced, the boat shall notify the race committee before the warning signal. As soon as practicable after coming ashore, the boat shall comply with instruction 8.6 and the replaced item shall be presented to the ISAF Technical Delegate. If the ISAF Technical Delegate decides that the item could have been used in the race or had been purposely damaged by anyone associated with the boat, the committee may request action under rule 69.1(a).
- 8.8 Advice to competitors regarding collision damage:
- If your boat is involved in an incident with another boat which may have resulted in damage, and you believe the other boat was responsible for this damage, you are advised to protest even if the other boat takes a penalty. If on coming ashore the skipper of the other boat accepts responsibility for the damage and signs a statement to this effect on a damage registration form, the protest may be withdrawn under rule 63.1.

9. Schedule of Races

- 9.1 Racing is scheduled from 11 July 2010 up to and including 16 July 2010 with a lay day (no racing) scheduled on 13 July 2010.
- 9.2 The numbers of races scheduled for all classes are as follows:
- Number of races: 12
- 09 July 2010 – Training Day
- 10 July 2010 – Practice Races
- 11 July 2010 – 3 Races
- 12 July 2010 – 3 Races
- 13 July 2010 – Lay Day
- 14 July 2010 – 3 Races
- 15 July 2010 – 2 Races
- 16 July 2010 – 1 Race
- 9.3 The scheduled time of the warning signal for the first race each day is 1200. The scheduled time of the warning signal for the practice race is 1200.
- 9.4 If less than 3 races are completed prior to the Lay Day then 3 races will be scheduled on 13th July.

- 9.5 An orange flag shall be used to mark one end of the starting line (signal boat). This flag will be raised with one long sound signal at least four minutes before the warning signal is displayed to alert competitors and coaches that a race or racing sequence will start soon. The flag shall be used as follows:
- a) Before the first scheduled warning signal of the day (even if the starting procedure will begin on time) and,
 - b) When there has been a long postponement (more than 10 minutes) and
 - c) When more than one race will be held on the same day, the warning signal for the first race and each succeeding race will be made as soon as practicable.
- 9.6 If fewer than four races have been completed by the last day of racing, two races may be sailed on that day.
- 9.7 On the last day of racing no warning signal will be made after 1400.

10. Class Flags

Class flags will be:

Area Blue

Boy's Windsurfer	Blue flag – white RS:X insignia
Girl's Windsurfer	Red flag – white RS:X insignia
Open High Performance Dinghy	White flag - black 29er insignia

Area Yellow

Boy's One Person Dinghy	Blue flag – white Laser insignia
Girl's One Person Dinghy	Red flag – white Laser insignia

Area Orange

Boy's Two Person Dinghy	Blue flag – white 420 insignia
Girl's Two Person Dinghy	Red flag – white 420 insignia
Open Multihull	White flag – SL-16 insignia

11. Racing Areas

11.1 Attachment A shows the location of racing areas.

11.2 Racing area flags on the race committee boats will be:

Area	Flag
Blue – RS:X and 29er	Blue with RC on white background
Yellow – Laser Radial	Yellow with RC on white background
Orange – 420 and SL-16	Orange with RC on white background

12. The Courses

- 12.1 The diagrams in Attachment B show the courses, including the course signals, the approximate angles between legs, the order in which marks are to be passed, and the side on which each mark is to be left. Mark 3 and Mark 4 are shown as a gate, 3s/3p and 4s/4p, which the race committee may replace by a single Mark 3 or 4. If a single Mark 3 or 4 is used, it is to be left to port.
- 12.2 When there is a gate, boats shall sail between the gate marks from the direction of the previous mark and round either gate mark.
- 12.3 Courses will not be shortened. This changes rule 32.

13. Marks

Marks 1/1a, 2/2a, 3 (3s/3p) and 4 (4s/4p) will be as follows:

Area	Mark
Blue – RS:X and 29er	Conical blue with Volvo brand
Yellow – Laser Radial	Triangular yellow with Volvo brand
Orange – 420 (all marks) and SL-16 mark 3s/3p	Triangular orange with Volvo brand
Orange – SL-16 mark 1a and 2a	Triangular pink with Volvo brand

- 13.1 The starting marks will be the race committee starting boat at the starboard end and a boat displaying an orange flag at the port end. See Attachment B.
- 13.2 The finishing marks will be the race committee finishing boat at the port end and a buoy or a boat with an orange flag, at the starboard end. See Attachment B.
- 13.3 New marks as provided in instruction 15.1 will be of the same shape and colour as the original marks.
- 13.4 A race committee boat signalling a change of course is a mark as provided in instruction 15.2.

14. The Start

- 14.1 The starting line will be between staffs displaying orange flags on the starting marks.
- 14.2 Boats whose warning signal has not been made shall avoid the starting area.

14.3 A boat starting later than four minutes after her starting signal will be scored DNS. This changes rule A4 and A5.

14.4 If a boat fails to start or breaks rule 30.3, the race committee at Mark 1/1a or nearby will point flag X at her, make a sound signal and display her national sail letters as described in Appendix G1.1. The so identified boat shall immediately leave the course area. If she fails to do so she will be disqualified without a hearing and her score will not be excluded. This changes rule A5.

15. Change Of The Position Of The Next Mark

15.1 To change the next leg of the course, the race committee will lay a new mark and remove the original mark or move the original mark (or move the finishing line) as soon as practicable. When in a subsequent change a new mark is replaced, it will be replaced by an original mark.

15.2 Except at a gate, boats shall pass between the race committee boat signalling the change of course and the nearby mark, leaving the mark to port and the race committee boat to starboard. This changes rule 28.1.

16. The Finish

16.1 The finishing line will be between orange flags or shapes on the finishing marks.

17. Penalty System

17.1 For the SL-16 and 29er classes, rule 44.1 and 44.2 are changed so that the Two-Turns Penalty is replaced by the One-Turn Penalty.

17.2 A boat that has taken a penalty or retired under rule 44.1 shall complete an acknowledgement form at the race office within the protest time limit.

17.3 Appendix P will apply as changed by instruction 17.1.

18. Time Limits

18.1 Time limits are as follows:

Class	Time limit	Mark 1 time limit	Time limit after the first boat finishes	Race target time
Laser Radial, 420, SL-16	120 minutes	30 minutes	20 minutes	45 minutes
RS:X and 29er	60 minutes	20 minutes	20 minutes	25/30 minutes

18.2 If no boat or board has passed Mark 1 (1A) within the Mark 1 time limit the race will be abandoned.

- 18.3 Boats failing to finish within time limit after the first boat (see instruction 18.1) sails the course and finishes will be scored Did Not Finish. This changes rules 35 and A4 and A5.

19. Protests and Penalty System

- 19.1 Protest forms are available at the jury desk at the race office in the dinghy park. Protests shall be delivered there within the protest time limit.
- 19.2 For each event, the protest time limit is 90 minutes after the last boat has finished the last race of the day. The same protest time limit applies to all protests by the race committee and jury and to requests for redress. This changes rules 61.3 and 62.2.
- 19.3 Notices will be posted within 30 minutes of the protest time limit to inform competitors of hearings in which they are parties or named as witnesses. Hearings will be held in the jury office beginning as soon as possible.
- 19.4 Notices of protests by the race committee or jury will be posted to inform boats under rule 61.1(b).
- 19.5 A list of boats that, under instruction 17.3, have acknowledged breaking rule 42 or have been disqualified by the jury will be posted on the official notice board.
- 19.6 For the purpose of rule 64.3(b) the 'authority responsible' is the ISAF Technical Delegate.
- 19.7 Breaches of instructions 2, 3, 4, 7.3, 8.2, 8.5, 8.6, 8.7, 14.2, 17.2, 21, 23, 25, 26 and 27 will not be grounds for a protest by a boat. This changes rule 60.1(a). Penalties for these breaches may be less than disqualification if the jury so decides.
- 19.8 On the last racing day a request for reopening a hearing shall be delivered:
- (a) within the protest time limit if the requesting party was informed of the decision on the previous day;
 - (b) no later than 30 minutes after the requesting party was informed of the decision on that day.

This changes rule 66.

- 19.9 On the last racing day a request for redress from a jury decision shall be delivered no later than 30 minutes after the decision was posted. This changes rule 62.2.
- 19.10 Decisions of the jury will be final as provided in rule 70.5.

20. Scoring

- 20.1 Five races are required to be completed to constitute a series.
- 20.2 (a) When fewer than 5 races have been completed, a boat's series score will be the total of her race scores.

- (b) When 5 or more races have been completed, a boat's series score will be the total of her race scores excluding her one worst score.
- 20.3 To request correction of an alleged error in posted race or series results, a boat shall complete a scoring enquiry form available at the race office.
- 20.4 The scoring abbreviation for a discretionary penalty imposed under instruction 19.7 will be DPI.
- 20.5 For the RS: X Class: Rule B8.2, B8.3 and B8.8 shall not apply.

21. Safety Regulations

- 21.1 **Check-Out and Check-in Ashore.** The requirements of this instruction are specified for the safety of competitors.
 - (a) Both helm and crew shall individually check-out before racing by personally collecting their tally in exchange for their accreditation card which is then left ashore.
 - (b) Both helm and crew shall individually check-in immediately on returning to shore after racing, but no later than the protest time limit, by returning the tally personally to tally control in exchange for their accreditation card.
 - (c) The tally control point to check-out and check-in competitors will be located at the top of the main launching slipway.
 - (d) Tallies comprise numbered rubber wrist bands. Tallies shall be worn visibly, over clothing, on the right wrist by both helm and crew while afloat. Tally numbers will be issued at registration, and posted on the official notice board.
- 21.2 A boat that retires from a race shall notify the race committee as soon as possible.
- 21.3 Boats not leaving the shore for the day's races shall notify the race office as soon as possible.
- 21.4 Competitors shall wear life jackets or other adequate personal buoyancy while afloat. The organising authority reserves the right to reject any buoyancy jacket which it considers unsuitable. When no specifications are given in the class rules, personal buoyancy shall comply with CE EN393 (CE 50N - 50 Newton) or an equivalent standard, providing a minimum of 5kg of buoyancy, will be accepted.

22. Replacement of Crew

Substitution of competitors will only be allowed until 2000 on the day of the opening ceremony except with prior written approval of the ISAF Technical Delegate.

23. Equipment and Measurement Checks

A boat or equipment may be inspected at any time for compliance with the class rules and sailing instructions. On the water, a boat can be instructed by a race committee measurer to proceed immediately to a designated area for inspection.

24. Official Boats

Official boats will be marked as follows:

Official Boat	Flag
Race Committee	Racing Area Flag
ISAF Technical Delegate	Flag "ISAF TD"
PRO	Flag "PRO"
Jury	Flag "IJ"
VIP	Flag "VIP"
Gear	Flag "Gear"
Team Leader Boats	Flag "Team Leader"
ISAF Coach	Flag "ISAF Coach"
Press boats	Flag "PRESS"
Camera Crew	Flag "Camera Crew"
Photographer	Flag "Photographer"
Official Spectator boat	Flag "Spectator"
Rescue Boat	Flag "Rescue"

25. Support Boats

25.1 Private or team support boats are not permitted. Team leaders, coaches and other support personnel may go afloat only in craft supplied by the organizing authority, and clearly marked as such.

25.2 Team leaders, coaches and other support personnel shall neither make radio transmissions while afloat nor receive radio communications not available to all. This restriction also applies to mobile telephones.

25.3 Personal gear and or food (securely bagged and identified) may be picked up by the official team leader boats stationed off the starboard end of the starting line in all racing areas before the preparatory signal for each class.

25.4 Gear shall not be placed on any boat other than the team leader boats.

25.5 The gear may be reclaimed at the team leader boats until the protest time limit each day or between 0900 and 1000 on the following day upon presentation of the accreditation card. When two or more races are sailed on one day, gear may be collected from the team leader boats between races.

26. Trash disposal

Boats shall not put trash in the water. Trash may be placed aboard support and race committee boats.

27. Berthing

Boats shall be kept in their assigned spaces in the boat park.

28. Radio Communication

A boat shall neither make radio transmissions while afloat nor receive radio communications. This restriction also applies to mobile telephones.

29. Prizes

29.1 ISAF Medals

ISAF Medals in gold, silver and bronze will be awarded to the skipper and, where applicable, crew of the first, second and third place finishers.

29.2 ISAF Trophies – Two Person Dinghy Events

- (a) The ISAF World Youth Sailing Championship Trophy will be awarded to the winning crew in the Boys' Two Person Dinghy Event.
- (b) The RYA Trophy will be awarded to the winning crew in the Girls' Two Person Dinghy Event.

29.3 ISAF Trophies – One Person Dinghy Events

- (a) The ISAF St. Lawrence Trophy will be awarded to the winner in the Boys' One Person Dinghy Event.
- (b) The ISAF Royal Netherlands Centennial Trophy will be awarded to the winner in the Girls' One Person Dinghy Event.

29.4 ISAF Trophies – Windsurfing Events

- (a) The Paul Phelan Trophy will be awarded to the winner in the Boys' Windsurfing Event.
- (b) The ISAF St. Moritz Championship Trophy will be awarded to the winner in the Girls' Windsurfing Event.

29.5 ISAF Trophies – Multihull Event

The ISAF Paul Henderson Trophy will be awarded to the winning crew in the Open Multihull Event.

29.6 ISAF Trophies – Open High Performance Event

The Prince Henry the Navigator Cup will be awarded to the winning crew in the Open High Performance Event.

29.7 Special ISAF Trophies

- (a) The VOLVO Trophy for the top scoring national authority will be awarded. The best four race scores of each national authority will score points per race towards the trophy as follows:

Score	Points
1	10
2	9
3	8
4	7
5	6
6	5
7	4
8	3
9	2
10	1

If the fleets have not completed the same number of races the scores will be calculated for those races numbered in order of completion, completed by all fleets.

If there is a tie between two or more national authorities, they shall be ranked in order of their score in the last race. Any remaining tie shall be broken by using the National Authorities scores in the next to last race and so on until all ties are broken.

- (b) The Bengt Julin Trophy will be awarded on the votes of the sailors competing at the ISAF Youth Worlds to the National Team or a competitor that has, in their opinion, done most to foster international understanding and has displayed the attributes that should be encouraged in international competition. These attributes include, but are not limited to: sportsmanship, respect, graciousness, friendliness, and endeavour. A voting paper, the description of the voting procedure and the criteria for the award will be issued during registration.

29.8 The ISAF Trophies

The national authority whose competitor has won a trophy is responsible for ensuring the safe return of the trophy to the ISAF representative at the 2011 championship venue so that it arrives by the official arrival day.

30. Disclaimer of Liability

Competitors participate in the championship entirely at their own risk. See rule 4, Decision to Race. The organizing authority will not accept any liability for material damage or personal injury or death sustained in conjunction with or prior to, during, or after the championship.

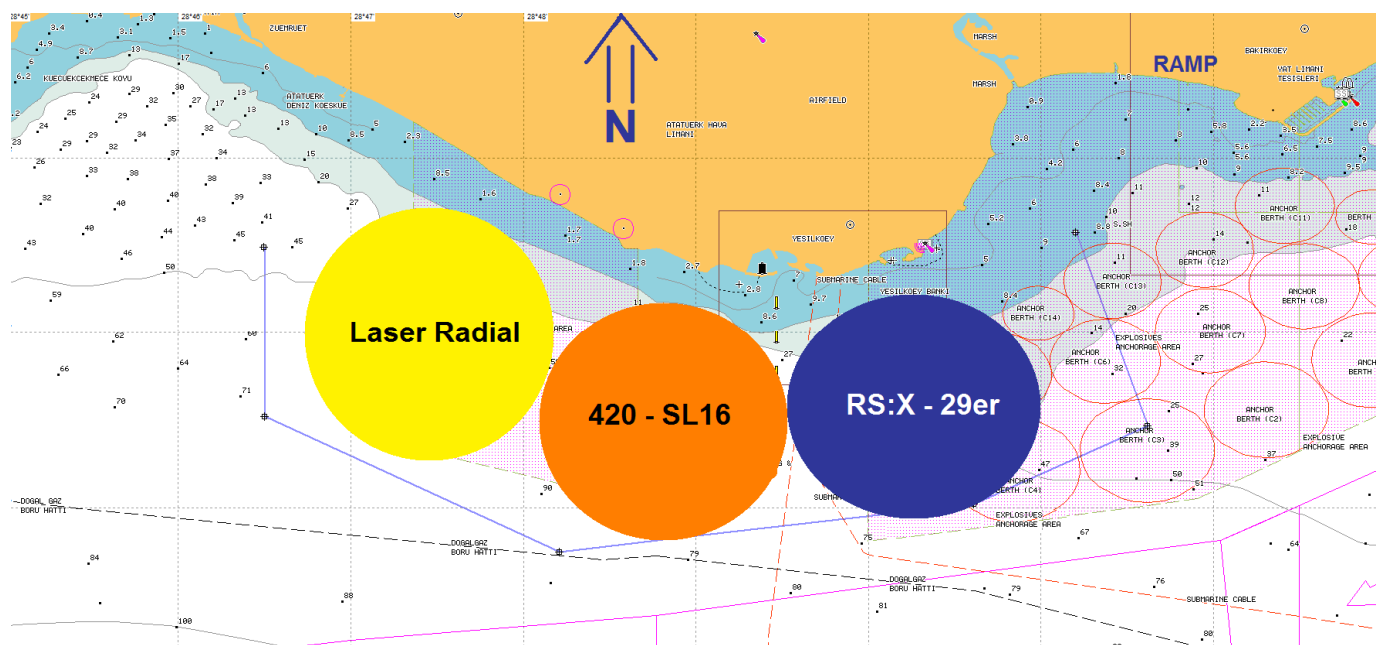
31. Rights to use name and likeness

In participating in this championship, a competitor automatically grants to the organizing authority, the ISAF and the sponsors of the championship the right in perpetuity to make, use and show at their discretion any motion pictures, still pictures and live, taped or filmed television and other reproductions of him or her during the championship, and of all of his or her material related to the championship, without compensation.

32. Insurance

Each competitor shall have travel insurance with coverage for accidents and health care, valid in the country of the Championship.

Attachment A - Racing Areas



BLUE RACE AREA RS:X (Boys&Girls Windsurfing)-29er (Open)

CENTRE: 40 56'606 N

028 50'331 E

Distance from the ramp is 2.2 nm, depth of the water is 25 mt

ORANGE RACE AREA 420 (Boy's&Girl's Two Person Dinghy and SL-16, Open Multihull)

CENTRE: 40 56'580 N

028 48'800 E

Distance from the ramp is 3.2 nm, depth of the water is 50 mt

YELLOW RACE AREA LASER RADIAL (Boy's&Girl's One Person Dinghy)

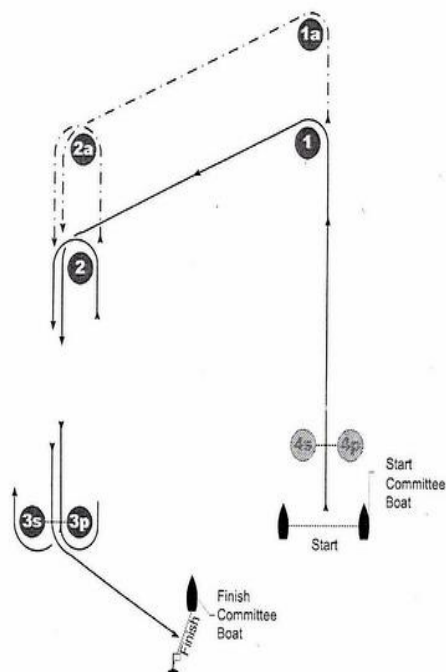
CENTRE: 40 57'025 N

028 47'428 E

Distance from the ramp is 4.3 nm, depth of the water is 55 mt

Attachment B – Course Diagrams

Attachment B-1

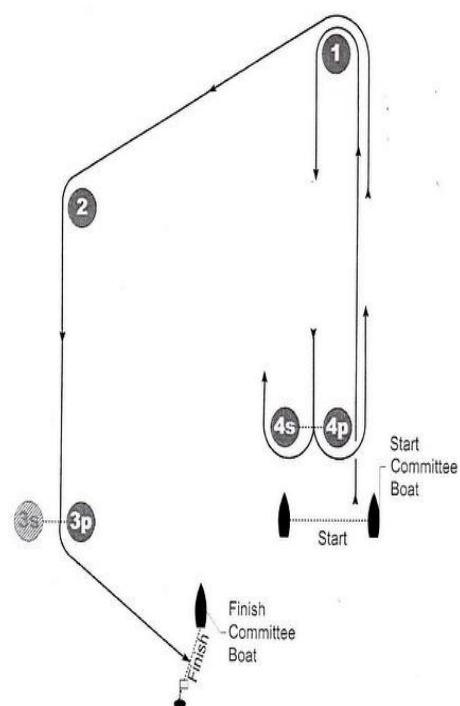


Course: Trapezoid Outer

Course Signal:	Mark rounding order:	
O1	START – 1 – 2 – 3s/3p – 2 – 3p – FINISH	
O2	START – 1 – 2 – 3s/3p – 2 – 3s/3p – 2 – 3p – FINISH	
OL1	START – 1a – 2a – 3s/3p – 2a – 3p – FINISH	
OL2	START – 1a – 2a – 3s/3p – 2a – 3s/3p – 2A – 3p – FINISH	
Interior angles at marks:		
	Mark 1, 1a	Mark 2, 2a
Laser Radial, RS:X	70°	110°
420	60°	120°
SL 16	60° – 70°	110° – 120°

Attachment B – Course Diagrams

Attachment B-2

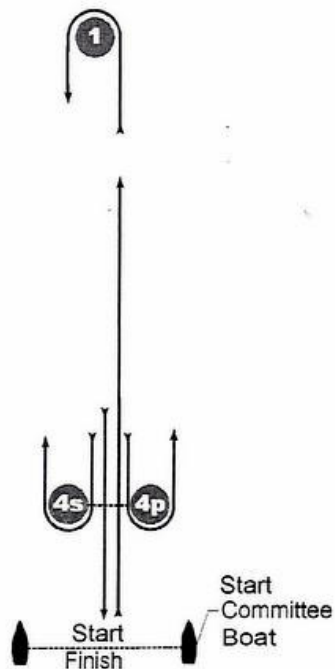


Course: Trapezoid Inner

Course Signal:	Mark rounding order:	
I 1	START – 1 – 4s/4p – 1 – 2 – 3p – FINISH	
I 2	START – 1 – 4s/4p – 1 – 4s/4p – 1 – 2 – 3p – FINISH	
Interior angles at marks:		
	Mark 1	Mark 2
Laser Radial, RS:X	70°	110°
420	60°	120°

Attachment B – Course Diagrams

Attachment B– 3



Course: Windward Leeward

Course Signal:	Mark rounding order:
W 2	START – 1 – 4S/4P – 1 – FINISH
W 3	START – 1 – 4S/4P – 1 – 4S/4P – 1 – FINISH
W 4	START – 1 – 4S/4P – 1 – 4S/4P – 1 – 4S/4P – 1 – FINISH